

**SANCAKLI**

# SANCAKLI

WE SHARE LOVE



## LET THE BEAUTY WE LOVE, BE WHAT WE DO.

One word connects 7 continents and billions of people. Knows one language; but can speak with anyone. Has no boundaries nor borders. All things to all people yet only some could find. Easy to say, hard to surrender. Stronger than diamond, fragile as crystal. Makes you eat your words and still starve for some more. Comes in different forms and ways but always with the same intention. Elder as the mankind, youthful as a teenager. Always been there, always will be.  
Love.

The reason we have started, the purpose we are aiming. In our first chair, now in this latest collection. We wanted to share our love for our profession. Let the beauty we love, be what we do.

We believe we are young enough to feel confident about our appearance and what others think about it; set our own rules, play with colors and shapes as we want; enjoy ourselves and live for the moment. We love who we are, what we have achieved so far. We savored every moment of our recreation. The only thing that matters from now on is to share love through our newest creation.

We will keep doing what we do the best, creating and sharing.

**We share love.**



# bir

Bir armchair features beautiful gentle curves from the arms through the back. This wavy comfort eases the difficulties of contemporary life by its heritage. Bir stands confident owing to its wise background. It is an expression of timeless attitude. The beauty of the chair design lies both in structure and the aesthetic quality of the laminated wood veneers material, with the sleek surfaces enhancing curvy shape. Various color and natural wood design options are available for your choice.

DESIGNER / ADNAN SERBEST

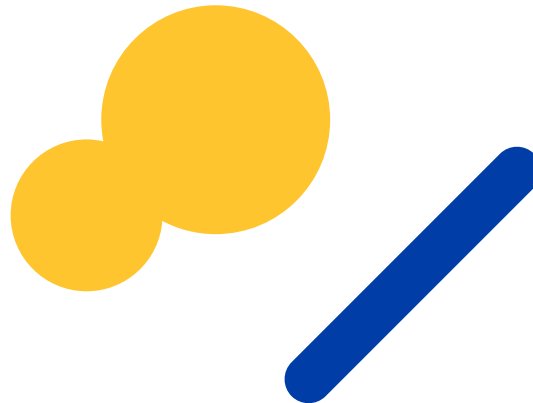




# mod

Made from laminated veneer and bended metal combined with the upholstery. Universal shape and a combination that adds to the cosy yet elegant effect which fits into every corner and style of decor.

DESIGNER / ADNAN SERBEST





## ilk

An armchair which evokes the comforting echoes of the past, offering a modern interpretation of the inciting look. This glitzy piece, evolves from the reassuring solidity of the first gentry, focusing on the coquettish persona. Combination of the laminated wood veneer, metal cores and upholstered foam makes the chair a perfect formula which adapts to every functional and aesthetic need and fit any habitat.

DESIGNER / ADNAN SERBEST

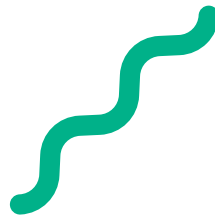




# gün

Product accentuates the quest for simplicity. Gün's friendly, fresh and playful soul, wipes out the ego, tries to convey the concept of a chair that speaks the universal language. This summery design has parallel cut wood veneer monoblock body with colorful powder coated metal legs. You can play with the legs and monoblock body to open the doors of your inner child.

DESIGNER / ADNAN SERBEST





## lin

The chair design is an attempt to give the floating vision in order to create a brave and dreamy character that would define an intellectual woman. It winks and seduces, never denying its strong personality. The silhouette of the chair is linear, elegant and visibly sexy. It is the simplicity of the geometric frame that gives the armchair its elegant character. Minimalist proportions meet with clean cut wooden cylinders to sharp angled plywood panels to ensure sophistication. You can choose various colors bravely or stay traditional with natural wood look.

DESIGNER / ADNAN SERBEST





## rom

Rom is a neat representation of the harmonious cultures of the Roman era referring to the relationship between people and architecture. Curved Laminated veneer and roman column like solid wood legs, resulted in the modern interpretation of classic shapes of the past. Rom tries to stay somewhere between piece of furniture and architectural structure.

DESIGNER / ADNAN SERBEST



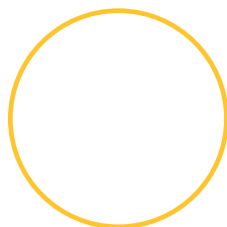




## soul

Reassuring, calm and silent. Embracing whoever sits down, providing maximum comfort and intimacy. Feminine look of laminated wood veneer legs, upholstered interior of the shell and leaning back along with the fine proportions and minimal construction gives design a welcoming, matronly and restful character. It will grow old gracefully and lean into people`s lives for years of pleasure.

DESIGNER / ADNAN SERBEST





## smile ☺

Smile chair allows you to not only enjoy the appearance and warmth of the wood, but also comfort and durability of plywood. Promising personality of young design should be pleasing to the eye and be able to fit various spaces from restaurants to rooms. The smile chair gives the energy of happiness and it is durable to last generations, but also supremely handsome in appearance.

DESIGNER / ADNAN SERBEST





**WE SHARE**  
**LOVE**

[info@sancakli1958.com](mailto:info@sancakli1958.com) [sancakli1958.com](http://sancakli1958.com) [@sancakli1958](https://www.instagram.com/sancakli1958)